

**NASSCOM**<sup>®</sup>

*India's Most Innovative &  
Emerging Software  
Product Companies*



*Best Agri Start-up in  
Application of Digital  
Technologies*

# ***Crop Map, a tech solution to optimize business across Livestock Agriculture value chain***

CLFMA OF INDIA

Mittal Chambers, 111, 11th Floor, Nariman Point, Mumbai - 400 021, Tel: 022 22026103 / [www.clfma.org](http://www.clfma.org)



The Core to **ANIMAL AGRICULTURE** is **ANIMAL FEED**

NUTRITION, GROWTH, IMMUNITY, REPRODUCTION ....

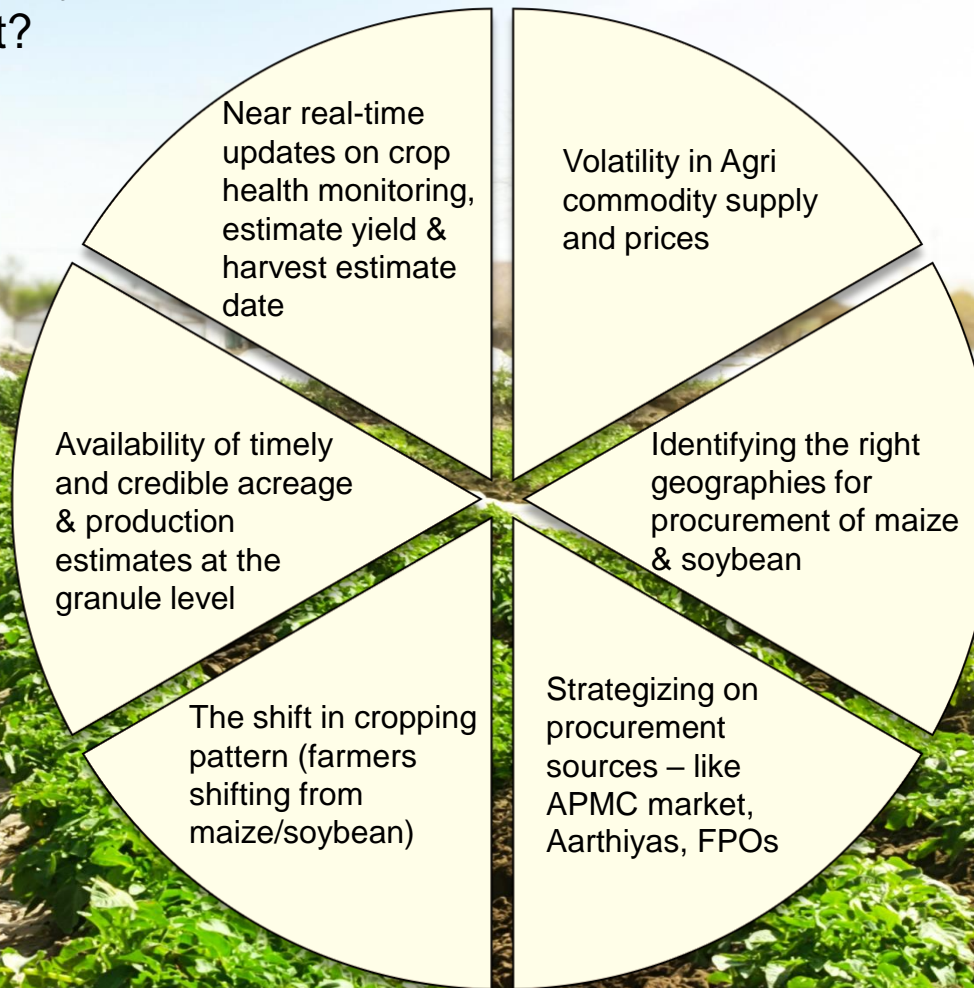
QUALITY, PRICE, COST, SUSTAINABILITY ...

**CLFMA OF INDIA**

Mittal Chambers, 111, 11th Floor, Nariman Point, Mumbai - 400 021, Tel: 022 22026103 / [www.clfma.org](http://www.clfma.org)

# There is no agricultural (crop) map that exists

What is the acreage of maize & soybean?  
Should I set up my procurement?





**PRESENTING - INDIA'S FIRST EVER**

**REAL TIME CROP MAP - SOYBEAN & MAIZE**

**CLFMA OF INDIA**

Mittal Chambers, 111, 11th Floor, Nariman Point, Mumbai - 400 021, Tel: 022 22026103 / [www.clfma.org](http://www.clfma.org)



# VIDEO – CROP MAP

**CLFMA OF INDIA**

Mittal Chambers, 111, 11th Floor, Nariman Point, Mumbai - 400 021, Tel: 022 22026103 / [www.clfma.org](http://www.clfma.org)

# Digital Crop Map of Maize & Soybean



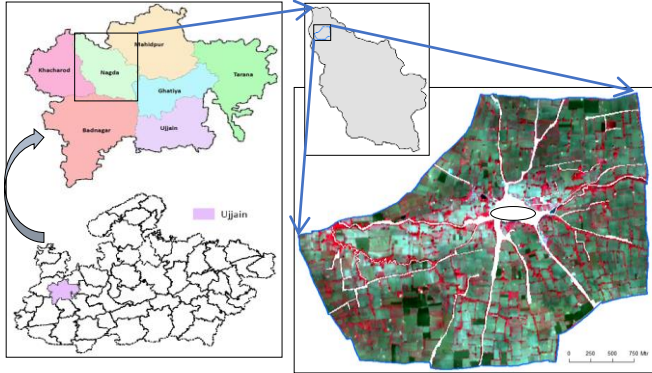
Creating & updating the agriculture map for maize & soybean for Kharif & Rabi

Making the data available at a click of a button (while the crop is standing in the field)

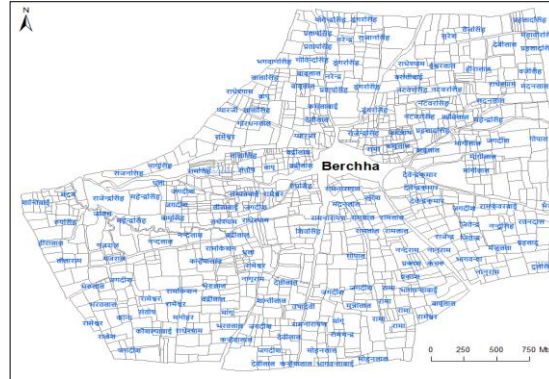
Analysis and aggregation based on client requirements (tehsil/ district)

Data democratization and availability to multiple stakeholders across the value chain

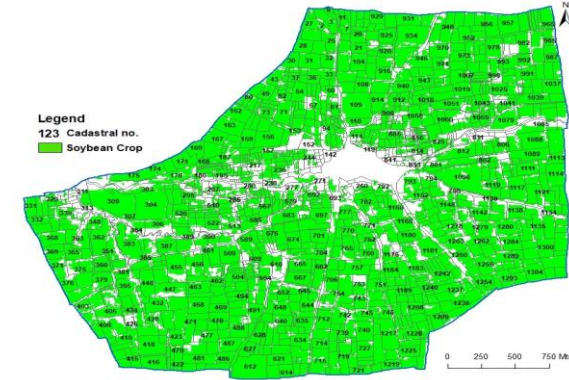
# BACKGEND ENGINE



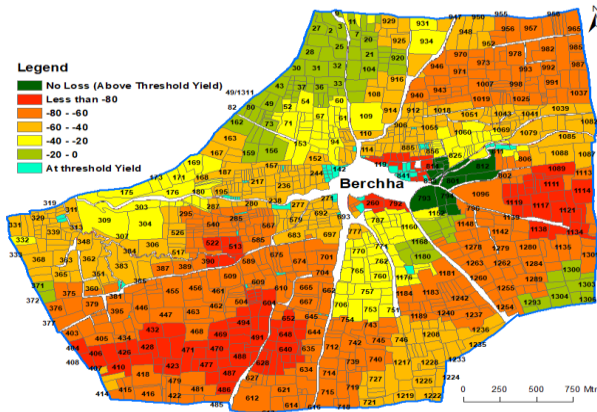
Procurement of Satellite images



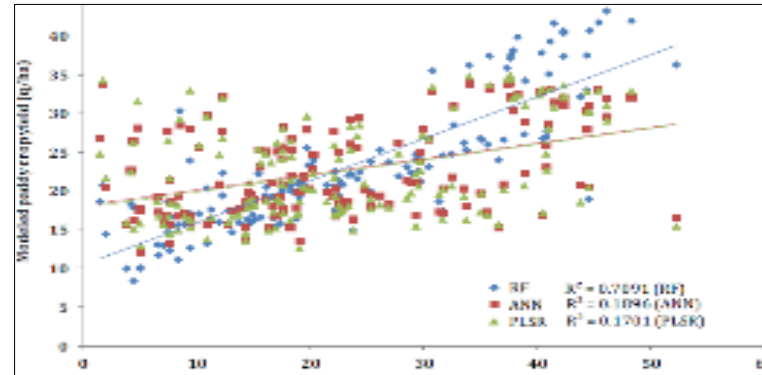
Geo Fenced Plots/Cadastral Maps



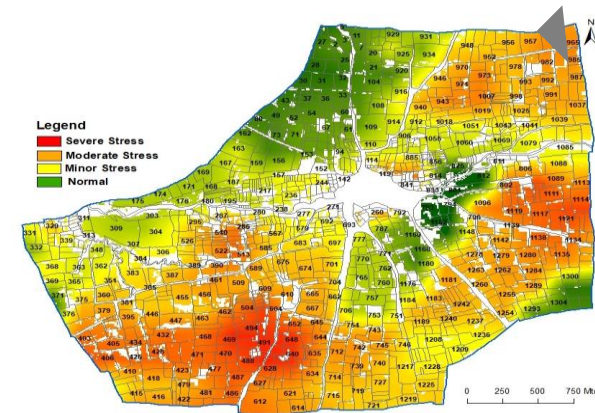
Crop Classification



Yield & Loss Estimation



AIML Modelling



Crop health determination

*\*Refer to Appendix for more details*



## Dataset

---

Large sets of *historical data* available including weather, crop signatures, soil map, CCEs/GCPs data, processed satellite imageries (SAR/Optical)

***First Indian company to introduce the application of Remote sensing in Agriculture***



## Technology

---

Leveraging latest AI/ML methodologies using open source platforms to derive precise results available via APIs & portal



## Skillset & Talent

---

*Right mix of talent with rich experience:* Remote sensing, GIS, Agronomy, Hazard vulnerability, Modelling skills, AI/ML modelling & Meteorology



# CROP HEALTH

NDMI  
**0.2**



Daily Temperature  
**35 C**

Accumulated Precipitation  
**MM**

P&D Alerts

NDVI  
**0.96**

Procurement planning at the tehsil/GP level. Price advantage and purchase forwarding across commodities

Analyze the crop cultivation patterns at the PAN-India level. Impacting government policy to evaluate seed technology (GM etc.) for doubling farmers' income

Assisting Government of India and the animal agriculture industry in realizing its full potential based on data

Export, import and government procurement planning in case of surplus production

Risk mitigation in the event of weather disparity or pest & disease infestation



# DEMO TIME

**CLFMA OF INDIA**

Mittal Chambers, 111, 11th Floor, Nariman Point, Mumbai - 400 021, Tel: 022 22026103 / [www.clfma.org](http://www.clfma.org)



# Sneak Peak – Soybean Kharif 2022

- ❖ Soybean for 2022 have shown overall reduction in crop acreage by **10%** as compare to year 2021
- ❖ The maximum negative deviation was recorded in the state of Maharashtra (where the shortfall is **10%**) followed by Madhya Pradesh (**9%**) when compared with 2021 data
- ❖ The negative deviation in both the states can be attributed to erratic and **excess rainfall recorded in the current Kharif season 2022.**
- ❖ Rajasthan is the only state which have recorded a positive deviation in the **crop spread acreage by 8%**
- ❖ The erratic rainfall as recorded by IMD in many districts have impacted the crop health and same was reflected in many locations where crop condition was found deteriorated
- ❖ Acreage of soybean in top 50 districts estimated to be **91,69,628** hectares
- ❖ The poor health condition of soybean crops in many district is expected to affect the final yield of the crop.



 **OUR BELIEF** | Every loss of LIFE from NATURAL CALAMITIES is PREVENTABLE

 **OUR MISSION** | Make the WORLD SAFER from the IMPACT of NATURAL CALAMITIES

 **OUR GOAL** | ZERO lives LOST on account of NATURAL CALAMITIES

Thank you!

Kumarjit Mazumder : September 30, 2022

For any queries, please drop us a mail at [info@rmsicropalytics.com](mailto:info@rmsicropalytics.com)

**CLFMA OF INDIA**

Mittal Chambers, 111, 11th Floor, Nariman Point, Mumbai - 400 021, Tel: 022 22026103 / [www.clfma.org](http://www.clfma.org)